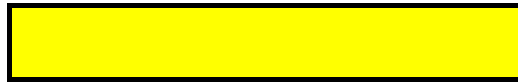

COMMERCIAL SHEET METAL



PRODUCT GUIDE

2021 EDITION

ORDER PROCESSING Brad 0450 088 161

DELIVERY SCHEDULING Nicole 0408 729 161

ORDERS orders@commercialsheetmetal.com.au

ESTIMATING quotes@commercialsheetmetal.com.au

OFFICE 3803 3200

195 MAGNESIUM DRIVE

CRESTMead QLD 4132

INDEX

	Page
Stock Materials	
Bluescope	3
Delivery and Packaging	4
Flashings	6
Colorbond Range	8
Zincalume	12
Galvabond	14
Stainless Steel	18
Aluminium	23
Commercial Gutter Range	24
Half Round Gutter	27
Commercial High Front Slotted Eaves Gutter	33
OG Style Gutters	40
Quad Gutter	42
Light gauge Fabrication	43
Box Gutter & Accessories	46
Sumps	48
Rainheads	50
Round Downpipe	52
Rectangle Downpipe	56
Window Hoods	59
Spiral Downpipe Range	60
Ridge Vents	65
Fixed Metal Louvre Range	66
Curved Flashings	68
Safe Trays	69
Other Items	70
Mesh	72
Welded Fabrication	
Bollard - Downpipe Protectors	73
Stainless Steel Welded Products	74
Sumps	76
Rainheads	78
Half Round Gutter	80
Downpipe	82
External Services	83
Technical Information	85



1200mm Wide Stock Coil - .55mm Standard Colorbond Range

Surfmist®	Evening Haze®	Shale Grey™	Dune®	Cove™
Windspray®	Gully™	Wallaby™	Jasper®	Basalt™
Manor Red®	Night Sky®	Deep Ocean®	Cottage Green®	Ironstone®
Monument®	Classic Cream™	Paperbark®	Pale Eucalypt®	Woodland Grey®

1200mm Wide Stock Coil - .55mm Premium Colorbond Range*

Ultra	Metallic	Matt	Others
Surfmist®	Aries®	Surfmist®	Cattai Green
Dune®	Astro®	Basalt™	Thredbo White
Windspray®	Celestian®	Dune®	Permaguard White
Monument®	Rhea®	Monument®	Coolmax Whitehaven
Woodland Grey®	Galactic®	Shale Grey™	
Shale Grey™	Cosmic®		
Deep Ocean®			

* Stock is limited for these ranges - Lead times are generally 3 weeks for extra supply

* Advise Job needs and we will pre order and hold in stock

1200mm Wide Stock Coil - 1mm and 1.2mm Colorbond Range

Surfmist®

1200mm Wide Stock Coil - Zinalume® and Galvabond®

Zinalume®

.55mm	.8mm
1mm	1.2mm

Galvabond®

.55mm	.8mm	1mm
1.2mm	1.6mm	
2mm	3.6 metre sheets	
3mm	3.6 metre sheets	

Deliveries

We have 4 vehicles on the road each day

We cover from The Tweed to Sunshine Coast and out to Ipswich Daily

We can arrange delivery to regional areas on request

Deliveries start from 5:30am and are complete most days by 1:30pm

Your Delivery Rates

Location		Location	
Brisbane	\$50.00	Gold Coast	\$50.00
North		South	
Caboolture	\$50.00	Tweed Heads	\$75.00
Kilcoy	\$125.00	Murwillumbah	\$100.00
Kingaroy	\$300.00	Byron Bay	\$150.00
Maroochydore	\$75.00	Ballina	\$200.00
Noosa	\$100.00	Lismore	\$200.00
Gympie	\$200.00	Grafton	\$450.00
Maryborough	\$350.00		
Bundaberg	\$550.00	West	
		Ipswich	\$50.00
South West		Gatton	\$75.00
Beaudesert	\$75.00	Toowoomba	\$125.00
Warwick	\$200.00	Oakey	\$175.00
Stanthorpe	\$300.00		

Delivery Scheduling

Contact Nicole for Delivery requests and schedules

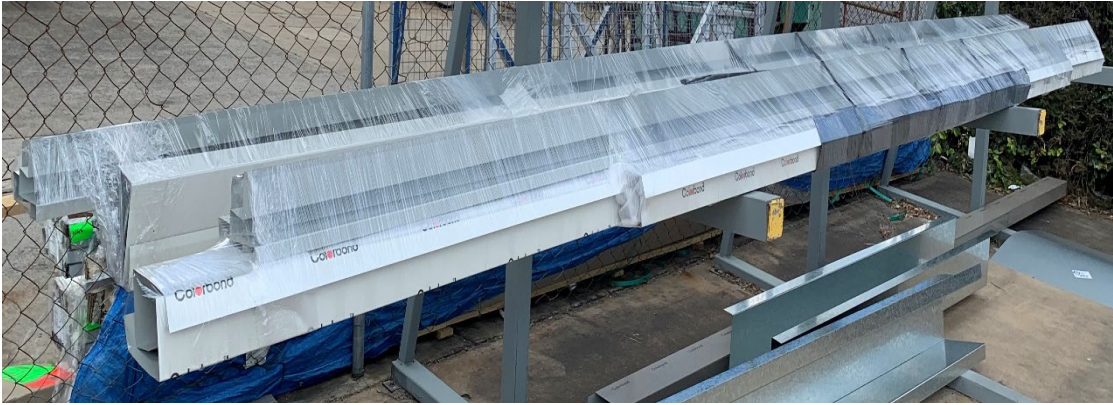
Contact Cooper before 7am for Delivery ETA if needed

Packaging Options

PLASTIC WRAPPED

Plastic Wrapped with foam sections between flashings

\$6 per lineal metre of pack



STILLAGES

Packed into Stillages - usually for long distance travel

\$25 per lineal metre of stillage

Stillage packing involves

Plastic wrapped around stillage



Goods placed inside stillage with foam, plastic corflute and tape for protection

.55mm Material folded into box gutter profile
top and bottom



Flashings

Order by 4:30 pm for Next Day Availability

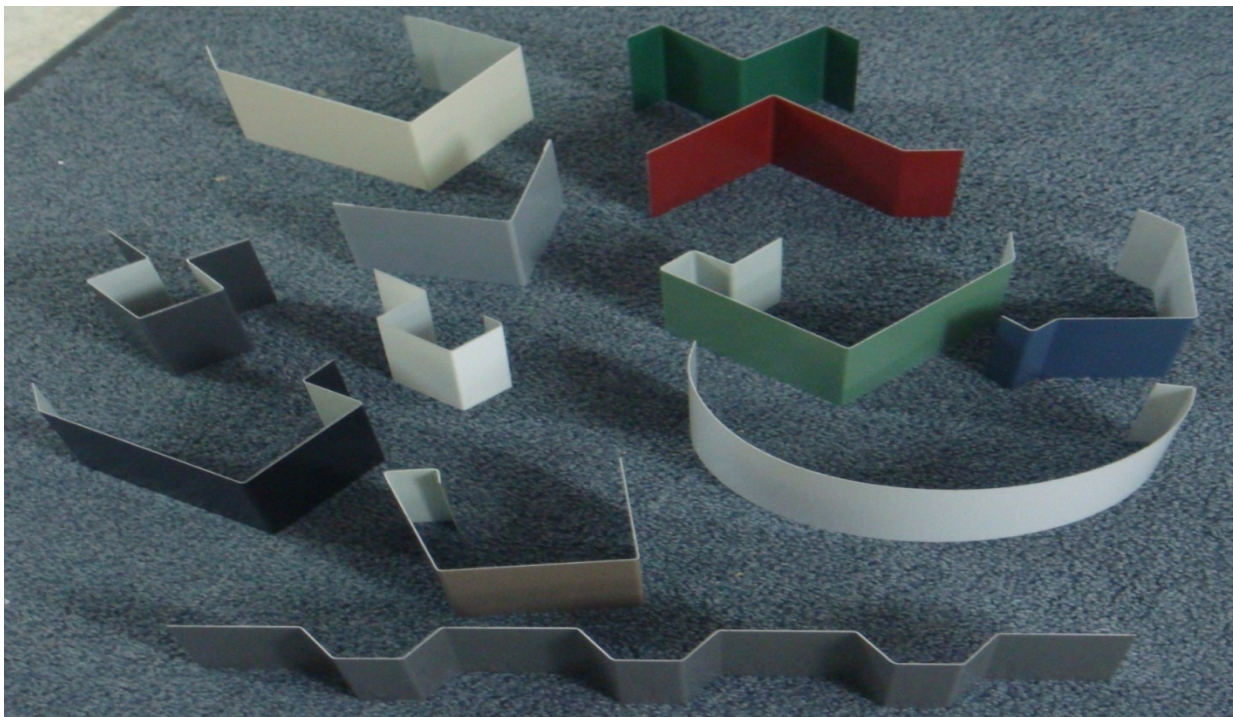
Up to 8 Metre Lengths

.55mm up to 1.6mm Thick

Up to 3.6 Metre Lengths for Heavy Gauge Materials

2mm and Up

Ability to fold any profile required on your Job



Preferred ordering method is via email with PDF attachment:

orders@commercialsheetmetal.com.au

1 Metre Minimum Charge for all Flashings

Squash Fold is charged as 2 folds

No Additional Charge for Taper Flashings

Commercial Sheet Metal - Stock List - May 20th 2020



Colorbond®

Extra Stock Lead time -
allow up to 3 weeks for

Ultra, Metallic, Matt, Non
Standard & Magnaflow

.55mm Standard Colorbond Range

Stock Level	Low	Mid	Good
Metres of 1200 Girth			
Basalt™			315
Classic Cream™			200
Cottage Green®			135
Cove™			60
Deep Ocean®			200
Dune®			315
Evening Haze®			315
Gully™	Nil		0
Ironstone®			120
Jasper®			135
Mangrove			90
Manor Red®			135
Monument®			495
Night Sky®			270
Pale Eucalypt®			270
Paperbark®			315
Shale Grey™			270
Surfmist®			540
Terrain	Nil		
Wallaby™			200
Windspray®			200
Woodland Grey®			315

1mm Surfmist			100
1.2mm Surfmist			30

Zincalume®

.55mm			630
.8mm			150
1.0mm			130
1.2mm			60

304 Grade Stainless Steel

.55mm 304 2b			150
1.2mm 304 No 4			100

316 grade Stainless Steel

.55mm 316 2b			180
1.2mm 316 No 4	Nil		
1.5mm 316 no 4			10

Stock level - Quick Guide

Low	Up to 50 metres of stock
Mid	50 - 150 metres of stock
Good	150 + metres of stock

.55mm Colorbond Ultra

Stock Level	Low	Mid	Good
Metres of 1200 Girth			
Surfmist®			180
Dune®			190
Windspray®			120
Monument®			120
Woodland Grey®	Nil		0
Shale Grey™	Nil		0
Deep Ocean®			30

.55mm Colorbond Metallic

Aries®			90
Astro®			135
Celestian®			160
Rhea®			180
Galactic®	Nil		
Cosmic®	Nil		

.55mm Colorbond Matt

Surfmist®			360
Basalt™			200
Dune®	Nil		
Monument®			135
Shale Grey™	Nil		

.55mm Colorbond Non Standard

Cattai Green			180
Thredbo White			20
Permaguard White			140
Coolmax Whitehaven			90

Galvabond®

.55mm			90
.8mm			200
1.0mm			120
1.2mm			110
1.6mm			70
2.0mm			50
3.0mm			40

.55mm Magnaflow

Off White			120
Monolith	Nil		
Mountain Blue			45
Gull Grey	Nil		
Armour Grey	Nil		
Slate Grey	Nil		

Aluminium

1mm 5005 Mill Finish			250
----------------------	--	--	-----

This Stock Form is Updated and Available Monthly - Request to be added to Email List

Fabricated Items Cover Page

Next Day on Request - Pending Time of Order



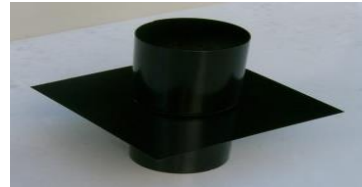
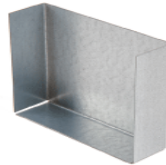
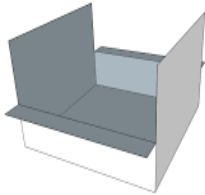
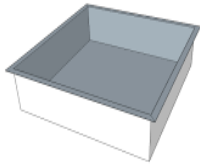
Width

Gal Box Gutter Brackets

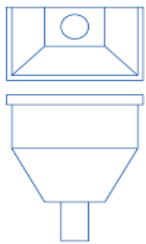
Fabricated to Size

* 1.6mm Gal Channel for Base

* 1mm Gal strap



Standard 2 Working Day Lead Time



RH 1



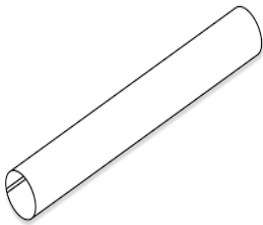
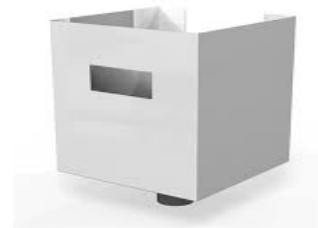
Half Cylinder



Conical

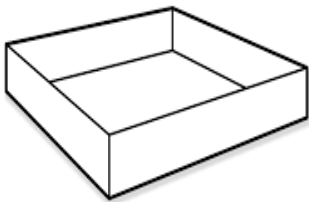
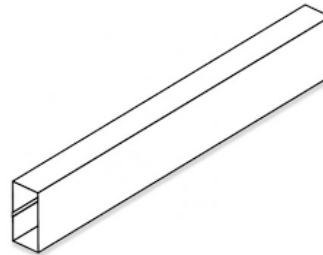


Ned Kelly

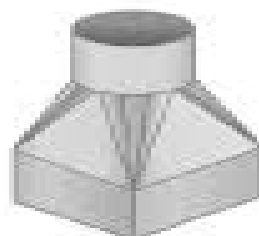


Round Downpipe to 6 metres

Rectangle Downpipe to 4 metres



Longer Lead Times



Light Gauge Fabricated Items - General Lead Time Guide

Item	Next Day Availability	48 Hour Availability	Other (Working Days)
Box Gutter Brackets	On Request	✓	
Stop Ends	On Request	✓	
Overflows	On Request	✓	
Chinaman Hats	X	✓	
Standard Sump	On Request	✓	
Tapered Bottom Sump	X	✓	
Sump with fitted drop	X	✓	
High Capacity Sump Units	X	✓	
Rainhead - Rectangle	On Request	✓	
Rainhead - Conical	On Request	✓	
Rainhead - Flat Bottom	On Request	✓	
Rainhead - Detailed design	X	X	3 -5 days
Round Downpipe - Straight	On Request	✓	
Round Downpipe Offset	X	✓	
Round Downpipe Elbow	X	✓	
T Bracket & Clip	On Request	✓	
Clip Only	On Request	✓	
Fabricated Drop	On Request	✓	
Rectangle Downpipe - Straight	On Request	✓	
Rectangle Downpipe Offset	X	✓	
Rectangle Downpipe Elbow	X	✓	
Rectangle Downpipe Clip	On Request	✓	
Rectangle Fabricated Drop	On Request	✓	
Fixed Metal Louvre	X	X	3 - 5 days
Ridge Vent	X	X	2 weeks
Window Hood	X	X	3 -5 days
Curves	X	On Request	3 days
Safe Trays	On Request	✓	
Spitters	On Request	✓	
Reducers / Transitions	X	✓	
Folded Downpipe Protectors	X	On Request	3 days
Circular Downpipe Protectors			
Hot Dip Galvanised	X	X	2 - 3 weeks
Pre Galvanised	X	X	1 week
Lockseam Flashings	X	✓	
## Next Day Availability - Occasionally Possible if Order Placed prior to 10am ##			

Working Days lead Time Guide

I have been given a Lead Time based on Working days but when will it be Ready?

The count starts on the day after order is placed

Example - Order Placed on Monday, **Day Number 1 is Tuesday**

Day Order Placed

Monday

Tuesday

Wednesday

Thursday

Friday

Order Due for Delivery

Working Days

1 - Next Day	Tuesday	Wednesday	Thursday	Friday	Monday
2	Wednesday	Thursday	Friday	Monday	Tuesday
3	Thursday	Friday	Monday	Tuesday	Wednesday
4	Friday	Monday	Tuesday	Wednesday	Thursday
5 - 1 week	Monday	Tuesday	Wednesday	Thursday	Friday
6	Tuesday	Wednesday	Thursday	Friday	Monday
7	Wednesday	Thursday	Friday	Monday	Tuesday
8	Thursday	Friday	Monday	Tuesday	Wednesday
9	Friday	Monday	Tuesday	Wednesday	Thursday
10 - 2 weeks	Monday	Tuesday	Wednesday	Thursday	Friday

Not Counted in Working days Lead Time

Public Holidays

Saturday

Sunday

Christmas Shutdown Period

Box Gutters & Accessories



Width

* 1.6mm Gal Channel for Base

* 1mm Gal strap

Gal Box Gutter Brackets - Fabricated to Size

Up to 400mm wide

401mm to 600mm wide

601mm to 800mm wide

801mm to 1000mm wide

1001mm to 1200mm wide

1201mm to 1500mm wide

\$6.77	each
\$7.66	each
\$9.48	each
\$10.82	each
\$13.85	each
\$17.74	each

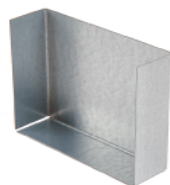


Gutter Board - 580mm cover x 6500mm Long

* Kept in stock

Per Length

\$61.63	each
---------	------



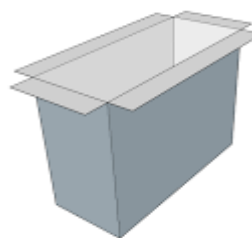
Stop Ends - Supplied Loose

.55mm Stop End - Price per each

Gutter Girth	C/bond	Zinc	Gal	Ultra	Metallic	304 2b	316 2b	Matt
400mm	\$17.45	\$16.24	\$16.42	\$18.59	\$19.72	\$19.64	\$21.85	\$18.12
600mm	\$21.77	\$19.96	\$20.24	\$23.50	\$25.19	\$25.06	\$28.38	\$22.78
800mm	\$21.77	\$19.96	\$20.24	\$23.50	\$25.19	\$25.06	\$28.38	\$22.78
1000mm	\$27.50	\$24.48	\$24.94	\$30.37	\$33.19	\$32.97	\$38.51	\$29.18
1200mm	\$27.50	\$24.48	\$24.94	\$30.37	\$33.19	\$32.97	\$38.51	\$29.18



Spitter



Fabricated Spitter - up to 400mm long

Size	C/bond	Zinc	Gal	Ultra	Metallic	304 2b	316 2b	Matt
75mm x 75mm	\$34.89	\$32.47	\$32.85	\$37.19	\$39.45	\$39.27	\$43.70	\$36.24
100mm x 75mm	\$34.89	\$32.47	\$32.85	\$37.19	\$39.45	\$39.27	\$43.70	\$36.24
100mm x 50mm	\$34.89	\$32.47	\$32.85	\$37.19	\$39.45	\$39.27	\$43.70	\$36.24
100mm x 100mm	\$34.89	\$32.47	\$32.85	\$37.19	\$39.45	\$39.27	\$43.70	\$36.24
100mm x 150mm	\$36.29	\$33.27	\$33.73	\$39.16	\$41.98	\$41.76	\$47.30	\$37.97
150mm x 150mm	\$36.29	\$33.27	\$33.73	\$39.16	\$41.98	\$41.76	\$47.30	\$37.97
200mm x 200mm	\$44.81	\$39.37	\$40.21	\$49.98	\$55.06	\$54.66	\$64.63	\$47.83
250mm x 250mm	\$46.20	\$40.16	\$41.09	\$51.95	\$57.60	\$57.15	\$68.23	\$49.57
300mm x 300mm	\$53.33	\$45.47	\$46.68	\$60.79	\$68.14	\$67.56	\$81.96	\$57.70

Box Gutters & Accessories



* Round Overflows

* Allowed up to 500mm Overall Height

.55mm Overflow - Price per each

Diam	C/bond	Zinc	Gal	Ultra	Metallic	304 2b	316 2b	Matt	
75mm	\$48.14	\$46.33	\$46.61	\$49.87	\$51.56	\$51.43	\$54.75	\$49.15	
90mm	\$48.14	\$46.33	\$46.61	\$49.87	\$51.56	\$51.43	\$54.75	\$49.15	
100mm	\$49.54	\$47.13	\$47.50	\$51.84	\$54.10	\$53.92	\$58.35	\$50.89	
125mm	\$57.57	\$54.85	\$55.27	\$60.15	\$62.69	\$62.49	\$67.48	\$59.08	
150mm	\$65.59	\$62.57	\$63.03	\$68.46	\$71.29	\$71.07	\$76.60	\$67.27	
225mm	\$85.83	\$80.39	\$81.23	\$91.00	\$96.08	\$95.68	\$105.65	\$88.86	
300mm	\$107.47	\$99.01	\$100.31	\$115.51	\$123.42	\$122.80	\$138.30	\$112.17	

* Round Overflows

* 501mm to 800mm Overall Height

.55mm Overflow - Price per each

Diam	C/bond	Zinc	Gal	Ultra	Metallic	304 2b	316 2b	Matt	
75mm	\$60.18	\$57.92	\$58.26	\$62.33	\$64.45	\$64.29	\$68.44	\$61.44	
90mm	\$60.18	\$57.92	\$58.26	\$62.33	\$64.45	\$64.29	\$68.44	\$61.44	
100mm	\$61.93	\$58.91	\$59.37	\$64.80	\$67.62	\$67.40	\$72.94	\$63.61	
125mm	\$71.96	\$68.56	\$69.08	\$75.19	\$78.37	\$78.12	\$84.35	\$73.85	
150mm	\$81.99	\$78.21	\$78.79	\$85.58	\$89.11	\$88.83	\$95.75	\$84.09	
225mm	\$107.29	\$100.49	\$101.54	\$113.75	\$120.10	\$119.61	\$132.07	\$111.07	
300mm	\$134.33	\$123.76	\$125.39	\$144.39	\$154.27	\$153.50	\$172.88	\$140.22	



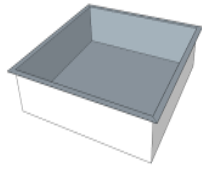
* Chinaman Hats

* 3 legs riveted / spot welded

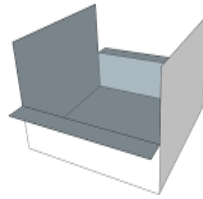
.55mm Chinaman Hat - Price per each

Diam	C/bond	Zinc	Gal	Ultra	Metallic	304 2b	316 2b	Matt	
75mm	\$48.14	\$46.33	\$46.61	\$49.87	\$51.56	\$51.43	\$54.75	\$49.15	
90mm	\$48.14	\$46.33	\$46.61	\$49.87	\$51.56	\$51.43	\$54.75	\$49.15	
100mm	\$49.54	\$47.13	\$47.50	\$51.84	\$54.10	\$53.92	\$58.35	\$50.89	
125mm	\$57.57	\$54.85	\$55.27	\$60.15	\$62.69	\$62.49	\$67.48	\$59.08	
150mm	\$65.59	\$62.57	\$63.03	\$68.46	\$71.29	\$71.07	\$76.60	\$67.27	
225mm	\$85.83	\$80.39	\$81.23	\$91.00	\$96.08	\$95.68	\$105.65	\$88.86	
300mm	\$107.47	\$99.01	\$100.31	\$115.51	\$123.42	\$122.80	\$138.30	\$112.17	

Sumps



* Standard Flat Bottom Style



* Inline Style

* Stop End Style

.55mm Sump - Price per each

Size	C/bond	Zinc	Gal	Ultra	Metallic	304 2b	316 2b	Matt	
300mm Square	\$69.78	\$64.95	\$65.69	\$74.38	\$78.90	\$78.54	\$87.40	\$72.47	
400mm Square	\$72.58	\$66.53	\$67.47	\$78.32	\$83.97	\$83.53	\$94.60	\$75.94	
500mm Square	\$75.37	\$68.12	\$69.24	\$82.26	\$89.04	\$88.51	\$101.80	\$79.41	
600mm Square	\$79.56	\$70.50	\$71.90	\$88.18	\$96.65	\$95.99	\$112.60	\$84.61	
700mm Square	\$92.48	\$81.00	\$82.77	\$103.39	\$114.12	\$113.28	\$134.33	\$98.87	
800mm Square	\$103.99	\$90.70	\$92.75	\$116.63	\$129.06	\$128.08	\$152.45	\$111.39	
900mm Square	\$109.58	\$93.87	\$96.29	\$124.52	\$139.20	\$138.05	\$166.85	\$118.33	
1000mm Square	\$132.61	\$113.28	\$116.26	\$151.00	\$169.07	\$167.66	\$203.10	\$143.38	

Price Notes

- # When unequal sides - use the biggest side
- # Prices above cover up to 150mm Deep Sumps
- # If 151mm to 250mm Deep - go to next size up
- # If 251mm to 350mm Deep - go 2 sizes up



* Tapered Bottom Sumps

.55mm Material - Price per each

Size	C/bond	Zinc	Gal	Ultra	Metallic	304 2b	316 2b	Matt	
300mm Square	\$104.67	\$97.42	\$98.54	\$111.57	\$118.34	\$117.81	\$131.10	\$108.71	
400mm Square	\$108.86	\$99.80	\$101.20	\$117.48	\$125.95	\$125.29	\$141.90	\$113.91	
500mm Square	\$113.05	\$102.18	\$103.86	\$123.40	\$133.56	\$132.77	\$152.70	\$119.11	
600mm Square	\$119.34	\$105.75	\$107.84	\$132.27	\$144.98	\$143.98	\$168.90	\$126.91	
700mm Square	\$138.71	\$121.49	\$124.15	\$155.09	\$171.18	\$169.92	\$201.49	\$148.30	
800mm Square	\$155.99	\$136.05	\$139.12	\$174.95	\$193.59	\$192.13	\$228.68	\$167.09	
900mm Square	\$164.37	\$140.81	\$144.44	\$186.78	\$208.81	\$207.08	\$250.28	\$177.49	
1000mm Square	\$198.92	\$169.92	\$174.39	\$226.50	\$253.61	\$251.48	\$304.65	\$215.07	

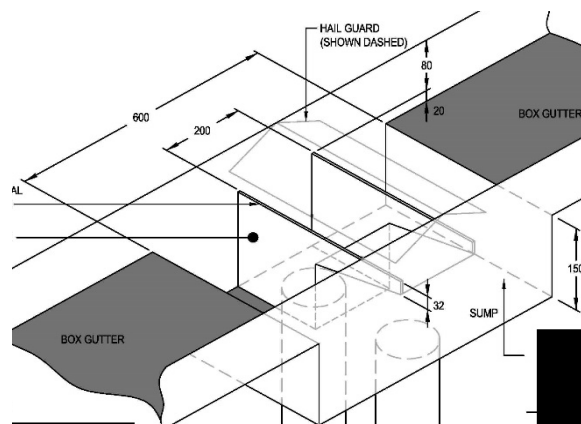
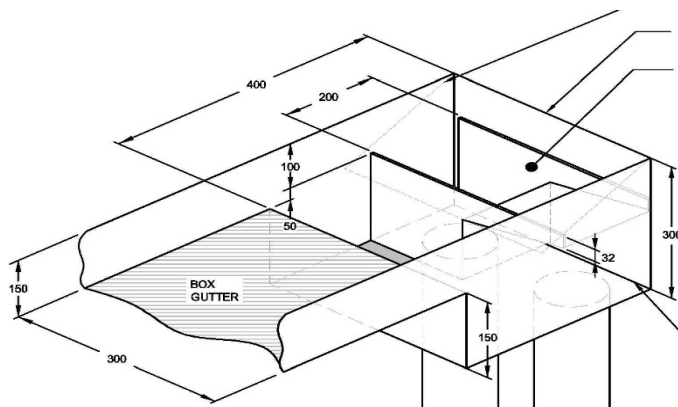
Price Notes

- # When unequal sides - use the biggest side
- # Prices above cover up to 150mm Deep Sumps
- # If 151mm to 250mm Deep - go to next size up
- # If 251mm to 350mm Deep - go 2 sizes up

Option for Fitted Drop into Any Sump as Extra

	C/bond	Zinc	Gal	Ultra	Metallic	304 2b	316 2b	Matt	
100 or 150mm	\$46.75	\$45.54	\$45.73	\$47.90	\$49.03	\$48.94	\$51.15	\$47.42	
225mm	\$56.75	\$55.54	\$55.73	\$57.90	\$59.03	\$58.94	\$61.15	\$57.42	

High Capacity Sump Units



Included Per Unit - Fitted

Sump

Weir

2 x Drops

Price Per Unit With Up to 150mm diam drop - 2 off

Sump Size	C/bond	Zinc	Gal	Ultra	Metallic	304 2b	316 2b	Matt	
400mm square	\$235.85	\$224.98	\$226.65	\$246.19	\$256.36	\$255.56	\$275.50	\$241.91	
600mm square	\$245.63	\$230.53	\$232.86	\$259.99	\$274.12	\$273.01	\$300.70	\$254.04	
800mm square	\$272.86	\$252.32	\$255.48	\$292.39	\$311.59	\$310.09	\$347.75	\$284.29	
1000mm square	\$305.67	\$277.27	\$281.65	\$332.67	\$359.22	\$357.14	\$409.20	\$321.48	

Price Per Unit With 2 x 225mm or 300mm diam drop

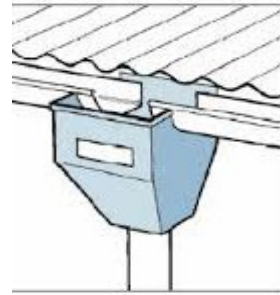
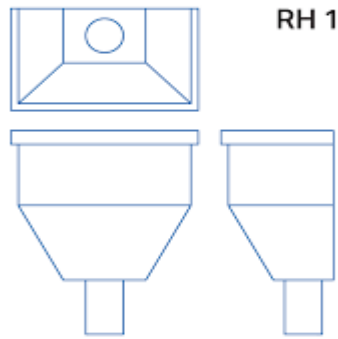
Sump Size	C/bond	Zinc	Gal	Ultra	Metallic	304 2b	316 2b	Matt	
600mm square	\$265.63	\$248.11	\$250.81	\$282.29	\$298.67	\$297.39	\$329.51	\$275.38	
800mm square	\$292.86	\$272.32	\$275.48	\$312.39	\$331.59	\$330.09	\$367.75	\$304.29	
1000mm square	\$325.67	\$297.27	\$301.65	\$352.67	\$379.22	\$377.14	\$429.20	\$341.48	

Option for Weir Supplied Loose

Sump Size	C/bond	Zinc	Gal	Ultra	Metallic	304 2b	316 2b	Matt	
400mm square	\$69.78	\$64.95	\$65.69	\$74.38	\$78.90	\$78.54	\$87.40	\$72.47	
600mm square	\$72.58	\$66.53	\$67.47	\$78.32	\$83.97	\$83.53	\$94.60	\$75.94	
800mm square	\$75.37	\$68.12	\$69.24	\$82.26	\$89.04	\$88.51	\$101.80	\$79.41	
1000mm square	\$79.56	\$70.50	\$71.90	\$88.18	\$96.65	\$95.99	\$112.60	\$84.61	

All Other Loose components refer sump and drop pricing

Rainheads



Rectangular Style Rainheads

.55mm Material - Price per Each

Width	C/bond	Zinc	Gal	Ultra	Metallic	304 2b	316 2b	Matt	
300mm	\$210.02	\$201.57	\$202.87	\$218.07	\$225.97	\$225.35	\$240.86	\$214.73	
400mm	\$215.61	\$204.74	\$206.41	\$225.95	\$236.12	\$235.32	\$255.26	\$221.67	
500mm	\$238.65	\$224.15	\$226.38	\$252.43	\$265.99	\$264.93	\$291.51	\$246.72	
600mm	\$244.23	\$227.32	\$229.93	\$260.32	\$276.14	\$274.90	\$305.91	\$253.65	
750mm	\$267.27	\$246.73	\$249.89	\$286.80	\$306.01	\$304.50	\$342.16	\$278.70	
900mm	\$290.30	\$266.14	\$269.86	\$313.28	\$335.88	\$334.10	\$378.41	\$303.75	
1200mm	\$362.88	\$332.67	\$337.33	\$391.60	\$419.85	\$417.63	\$473.01	\$379.69	

Price Notes

* Fitted Drop is included in Price

Conical Style Rainheads



.55mm Material - Price per Each

Width	C/bond	Zinc	Gal	Ultra	Metallic	304 2b	316 2b	Matt	
300mm	\$195.37	\$186.91	\$188.22	\$203.41	\$211.32	\$210.70	\$226.21	\$200.08	
400mm	\$200.96	\$190.09	\$191.76	\$211.30	\$221.47	\$220.67	\$240.61	\$207.01	
500mm	\$223.99	\$209.49	\$211.73	\$237.78	\$251.34	\$250.28	\$276.86	\$232.07	
600mm	\$229.58	\$212.67	\$215.27	\$245.67	\$261.49	\$260.24	\$291.26	\$239.00	
750mm	\$252.62	\$232.08	\$235.24	\$272.15	\$291.36	\$289.85	\$327.51	\$264.05	
900mm	\$275.65	\$251.48	\$255.21	\$298.63	\$321.23	\$319.45	\$363.76	\$289.10	
1200mm	\$344.56	\$314.36	\$319.01	\$373.29	\$401.53	\$399.32	\$454.70	\$361.38	

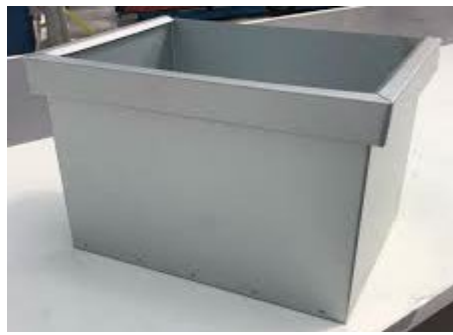
Price Notes

* Fitted Drop is included in Price

Option for Overflow Hole or Fitted Overflow - Extra

	C/bond	Zinc	Gal	Ultra	Metallic	304 2b	316 2b	Matt	
Hole Cut Only	\$23.44	\$23.44	\$23.44	\$23.44	\$23.44	\$23.44	\$23.44	\$23.44	
Fitted Overflow	\$46.75	\$45.54	\$45.73	\$47.90	\$49.03	\$48.94	\$51.15	\$47.42	

Rainheads



Flat Bottom Style Rainheads

.55mm Material - Price per Each

Width	C/bond	Zinc	Gal	Ultra	Metallic	304 2b	316 2b	Matt	
300mm	\$180.02	\$171.57	\$172.87	\$188.07	\$195.97	\$195.35	\$210.86	\$184.73	
400mm	\$185.61	\$174.74	\$176.41	\$195.95	\$206.12	\$205.32	\$225.26	\$191.67	
500mm	\$208.65	\$194.15	\$196.38	\$222.43	\$235.99	\$234.93	\$261.51	\$216.72	
600mm	\$214.23	\$197.32	\$199.93	\$230.32	\$246.14	\$244.90	\$275.91	\$223.65	
750mm	\$237.27	\$216.73	\$219.89	\$256.80	\$276.01	\$274.50	\$312.16	\$248.70	
900mm	\$260.30	\$236.14	\$239.86	\$283.28	\$305.88	\$304.10	\$348.41	\$273.75	
1200mm	\$325.38	\$295.17	\$299.83	\$354.10	\$382.35	\$380.13	\$435.51	\$342.19	

Price Notes

* Fitted Drop is included in Price

Option for Overflow Hole or Fitted Overflow - Extra

	C/bond	Zinc	Gal	Ultra	Metallic	304 2b	316 2b	Matt	
Hole Cut Only	\$23.44	\$23.44	\$23.44	\$23.44	\$23.44	\$23.44	\$23.44	\$23.44	
Fitted Overflow	\$46.75	\$45.54	\$45.73	\$47.90	\$49.03	\$48.94	\$51.15	\$47.42	

Leaf Eater Style Rainheads



Gal Mesh On top

Mozzie Mesh inside

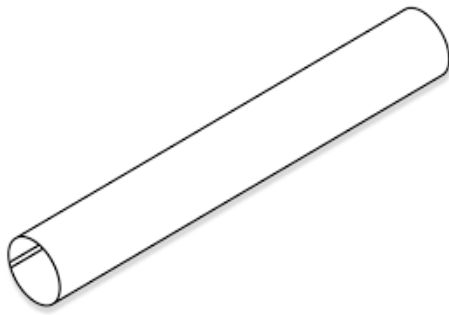
.55mm Material - Price per Each

Suit Drop size	C/bond	Zinc	Gal	Ultra	Metallic	304 2b	316 2b	Matt	
100mm	\$244.23	\$227.32	\$229.93	\$260.32	\$276.14	\$274.90	\$305.91	\$253.65	
150mm	\$267.27	\$246.73	\$249.89	\$286.80	\$306.01	\$304.50	\$342.16	\$278.70	
225mm	\$290.30	\$266.14	\$269.86	\$313.28	\$335.88	\$334.10	\$378.41	\$303.75	
300mm	\$362.88	\$332.67	\$337.33	\$391.60	\$419.85	\$417.63	\$473.01	\$379.69	

Price Notes

* Fitted Drop is included in Price

Round Downpipe



Up to 6 metre Lengths

75mm diam to 300mm diam

Riveted Bends to make offset

Tapered downpipe

T brackets & Clips Available

Downpipe is charged per metre with 1 metre minimum charge

Standard Pipe lead Time is 2 Working Days, offsets longer

.55mm Downpipe - Price per lineal Metre

Diam	Max	C/bond	Zinc	Gal	Ultra	Metallic	304 2b	316 2b	Matt
75mm	2.4 metre	\$20.10	\$16.48	\$17.04	\$23.55	\$26.94	\$26.67	\$33.32	\$22.12
90mm	Up to 6 metre length	\$20.94	\$16.95	\$17.57	\$24.73	\$28.46	\$28.17	\$35.48	\$23.16
100mm		\$21.50	\$17.27	\$17.92	\$25.52	\$29.48	\$29.17	\$36.92	\$23.86
125mm		\$25.69	\$21.12	\$22.05	\$32.90	\$38.55	\$38.11	\$49.18	\$30.52
150mm		\$25.69	\$21.12	\$22.05	\$32.90	\$38.55	\$38.11	\$49.18	\$30.52
225mm	2.4 metre	\$37.07	\$28.01	\$29.41	\$45.69	\$54.16	\$53.50	\$70.11	\$42.12
300mm		\$45.52	\$33.44	\$35.30	\$57.01	\$68.31	\$67.43	\$89.58	\$52.25

.55mm Material - Price Per Each Riveted Bend - Labour Only

Diam	75mm	90mm	100mm	125mm	150mm	225mm	300mm
C/bond, Zinc Gal	\$43.95	\$43.95	\$43.95	\$49.81	\$49.81	\$55.67	\$61.67
Stainless	\$49.81	\$49.81	\$49.81	\$55.67	\$55.67	\$60.67	\$66.67

Offset - Fabricated to Size



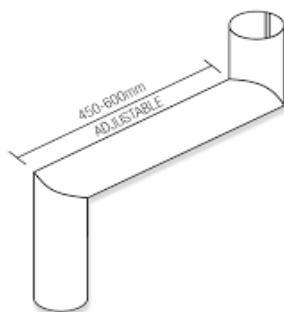
Pricing Notes

* Allow for the amount of pipe required at per metre rates from top of page

* Add Price for 2 x Riveted Bends as per below (or as many bends as required)

Round Downpipe

Adjustable Offset - .55mm Material - Price per unit



Diam		C/bond	Zinc	Gal	Ultra	Metallic	304 2b	316 2b	Matt
75mm		\$128.11	\$120.86	\$121.98	\$135.01	\$153.51	\$152.98	\$166.27	\$132.15
90mm		\$129.79	\$121.82	\$123.04	\$137.37	\$156.55	\$155.97	\$170.59	\$134.23
100mm		\$130.91	\$122.45	\$123.75	\$138.95	\$158.58	\$157.96	\$173.47	\$135.62
125mm		\$151.01	\$141.86	\$143.72	\$165.43	\$188.45	\$187.56	\$209.72	\$160.67
150mm		\$151.01	\$141.86	\$143.72	\$165.43	\$188.45	\$187.56	\$209.72	\$160.67
225mm		\$185.49	\$167.37	\$170.16	\$202.73	\$229.68	\$228.35	\$261.58	\$195.58
300mm		\$214.40	\$190.23	\$193.95	\$237.37	\$269.97	\$268.20	\$312.50	\$227.85

Riveted Elbow - 300mm x 300mm



.55mm Material - Price Per Elbow

Diam		C/bond	Zinc	Gal	Ultra	Metallic	304 2b	316 2b	Matt
75mm		\$64.06	\$60.43	\$60.99	\$67.50	\$76.75	\$76.49	\$83.13	\$66.07
90mm		\$64.90	\$60.91	\$61.52	\$68.69	\$78.28	\$77.98	\$85.29	\$67.11
100mm		\$65.45	\$61.22	\$61.88	\$69.48	\$79.29	\$78.98	\$86.73	\$67.81
125mm		\$75.51	\$70.93	\$71.86	\$82.72	\$94.22	\$93.78	\$104.86	\$80.33
150mm		\$75.51	\$70.93	\$71.86	\$82.72	\$94.22	\$93.78	\$104.86	\$80.33
225mm		\$92.75	\$83.68	\$85.08	\$101.36	\$114.84	\$114.17	\$130.79	\$97.79
300mm		\$107.20	\$95.11	\$96.98	\$118.69	\$134.99	\$134.10	\$156.25	\$113.92

Round Downpipe Accessories



T Bracket (.55mm) & Clip (.55mm) - price per set

Diam	C/bond	Zinc	Gal	Ultra	Metallic	304 2b	316 2b	Matt	
75mm	\$15.41	\$15.08	\$15.13	\$15.72	\$16.02	\$16.00	\$16.60	\$15.59	
90mm	\$15.41	\$15.08	\$15.13	\$15.72	\$16.02	\$16.00	\$16.60	\$15.59	
100mm	\$15.41	\$15.08	\$15.13	\$15.72	\$16.02	\$16.00	\$16.60	\$15.59	
125mm	\$18.63	\$18.18	\$18.25	\$19.06	\$19.48	\$19.45	\$20.28	\$18.88	
150mm	\$18.63	\$18.18	\$18.25	\$19.06	\$19.48	\$19.45	\$20.28	\$18.88	
225mm	\$22.03	\$21.37	\$21.47	\$22.65	\$23.26	\$23.21	\$24.41	\$22.39	
300mm	\$25.42	\$24.57	\$24.70	\$26.23	\$27.04	\$26.97	\$28.54	\$25.90	

T Bracket (3mm Gal - UNCOATED) & Clip (.55mm) - price per set

Diam	C/bond	Zinc	Gal	Ultra	Metallic	304 2b	316 2b	Matt	
75mm	\$24.82	\$24.59	\$24.63	\$25.04	\$25.25	\$28.74	\$29.15	\$24.95	
90mm	\$24.82	\$24.59	\$24.63	\$25.04	\$25.25	\$28.74	\$29.15	\$24.95	
100mm	\$24.82	\$24.59	\$24.63	\$25.04	\$25.25	\$28.74	\$29.15	\$24.95	
125mm	\$28.35	\$28.05	\$28.10	\$28.64	\$28.92	\$34.16	\$34.71	\$28.52	
150mm	\$28.35	\$28.05	\$28.10	\$28.64	\$28.92	\$34.16	\$34.71	\$28.52	
225mm	\$32.06	\$31.61	\$31.68	\$32.49	\$32.91	\$39.89	\$40.72	\$32.31	
300mm	\$35.77	\$35.16	\$35.25	\$36.34	\$36.90	\$45.63	\$46.74	\$36.10	

Clip Only Price - .55mm Material

Diam	C/bond	Zinc	Gal	Ultra	Metallic	304 2b	316 2b	Matt	
75mm	\$7.70	\$7.54	\$7.57	\$7.86	\$8.01	\$8.00	\$8.30	\$7.79	
90mm	\$7.70	\$7.54	\$7.57	\$7.86	\$8.01	\$8.00	\$8.30	\$7.79	
100mm	\$7.70	\$7.54	\$7.57	\$7.86	\$8.01	\$8.00	\$8.30	\$7.79	
125mm	\$9.31	\$9.09	\$9.12	\$9.53	\$9.74	\$9.73	\$10.14	\$9.44	
150mm	\$9.31	\$9.09	\$9.12	\$9.53	\$9.74	\$9.73	\$10.14	\$9.44	
225mm	\$11.01	\$10.69	\$10.74	\$11.32	\$11.63	\$11.61	\$12.21	\$11.19	
300mm	\$12.71	\$12.28	\$12.35	\$13.12	\$13.52	\$13.49	\$14.27	\$12.95	



Zincalume Stock Drops - Punched

90mm diam	
\$7.25	EACH

100mm diam	
\$7.25	EACH

150mm diam	
\$10.15	EACH

Round Downpipe Accessories



Fabricated Round Drop - up to 150mm long

Diam	C/bond	Zinc	Gal	Ultra	Metallic	304 2b	316 2b	Matt	
75mm	\$17.86	\$17.74	\$17.76	\$17.98	\$18.09	\$18.08	\$18.30	\$17.93	
90mm	\$18.14	\$17.90	\$17.94	\$18.37	\$18.60	\$18.58	\$19.02	\$18.27	
100mm	\$18.42	\$18.06	\$18.11	\$18.76	\$19.10	\$19.08	\$19.74	\$18.62	
125mm	\$18.70	\$18.22	\$18.29	\$19.16	\$19.61	\$19.58	\$20.46	\$18.97	
150mm	\$18.98	\$18.37	\$18.47	\$19.55	\$20.12	\$20.07	\$21.18	\$19.31	
225mm	\$22.75	\$21.78	\$21.93	\$23.67	\$24.57	\$24.50	\$26.27	\$23.28	
300mm	\$26.24	\$25.03	\$25.21	\$27.38	\$28.51	\$28.43	\$30.64	\$26.91	

Fabricated Round Drop - up to 500mm long

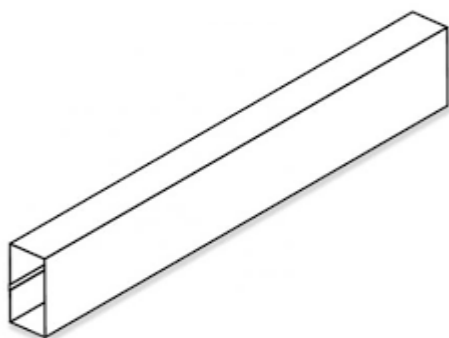
Diam	C/bond	Zinc	Gal	Ultra	Metallic	304 2b	316 2b	Matt	
75mm	\$26.79	\$26.61	\$26.64	\$26.96	\$27.13	\$27.12	\$27.45	\$26.89	
90mm	\$27.21	\$26.85	\$26.90	\$27.55	\$27.89	\$27.87	\$28.53	\$27.41	
100mm	\$27.63	\$27.09	\$27.17	\$28.15	\$28.65	\$28.61	\$29.61	\$27.93	
125mm	\$28.05	\$27.32	\$27.44	\$28.74	\$29.42	\$29.36	\$30.69	\$28.45	
150mm	\$28.47	\$27.56	\$27.70	\$29.33	\$30.18	\$30.11	\$31.77	\$28.97	
225mm	\$34.12	\$32.67	\$32.89	\$35.50	\$36.85	\$36.75	\$39.41	\$34.93	
300mm	\$39.35	\$37.54	\$37.82	\$41.08	\$42.77	\$42.64	\$45.96	\$40.36	



Fabricated Round Downpipe Spreader - using up to 2 metres of pipe

Diam		C/bond	Zinc	Gal	Ultra	Metallic	304 2b	316 2b	Matt
75mm		\$128.11	\$120.86	\$121.98	\$135.01	\$153.51	\$152.98	\$166.27	\$132.15
90mm		\$129.79	\$121.82	\$123.04	\$137.37	\$156.55	\$155.97	\$170.59	\$134.23
100mm		\$130.91	\$122.45	\$123.75	\$138.95	\$158.58	\$157.96	\$173.47	\$135.62
125mm		\$151.01	\$141.86	\$143.72	\$165.43	\$188.45	\$187.56	\$209.72	\$160.67
150mm		\$151.01	\$141.86	\$143.72	\$165.43	\$188.45	\$187.56	\$209.72	\$160.67
225mm		\$185.49	\$167.37	\$170.16	\$202.73	\$229.68	\$228.35	\$261.58	\$195.58
300mm		\$214.40	\$190.23	\$193.95	\$237.37	\$269.97	\$268.20	\$312.50	\$227.85

Rectangle / Square Downpipe



Up to 4 metre Lengths

Riveted Bends to make offset

Tapered downpipe

Clips

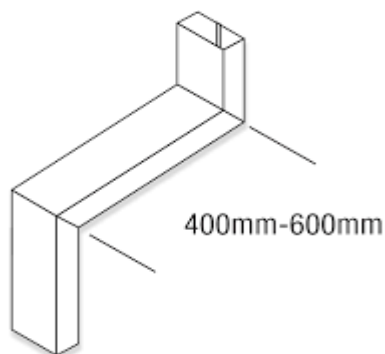
Downpipe is charged per metre with 1 metre minimum charge

Standard Pipe lead Time is 2 Working Days, offsets longer

.55mm Material - Price per lineal Metre

Size	C/bond	Zinc	Gal	Ultra	Metallic	304 2b	316 2b	Matt	
75mm x 75mm	\$23.87	\$19.88	\$20.50	\$27.66	\$31.39	\$31.10	\$38.41	\$26.09	
100mm x 75mm	\$23.87	\$19.88	\$20.50	\$27.66	\$31.39	\$31.10	\$38.41	\$26.09	
100mm x 50mm	\$23.87	\$19.88	\$20.50	\$27.66	\$31.39	\$31.10	\$38.41	\$26.09	
100mm x 100mm	\$31.55	\$25.51	\$26.44	\$37.30	\$42.95	\$42.50	\$53.58	\$34.92	
100mm x 150mm	\$31.55	\$25.51	\$26.44	\$37.30	\$42.95	\$42.50	\$53.58	\$34.92	
150mm x 150mm	\$38.54	\$29.48	\$30.87	\$47.16	\$55.63	\$54.96	\$71.58	\$43.58	
200mm x 200mm	\$44.96	\$34.39	\$36.02	\$55.01	\$64.90	\$64.12	\$83.51	\$50.85	
250mm x 250mm	\$51.38	\$39.30	\$41.16	\$62.87	\$74.17	\$73.29	\$95.44	\$58.11	

Adjustable Offset - .55mm Material - Price per unit



Size	C/bond	Zinc	Gal	Ultra	Metallic	304 2b	316 2b	Matt	
75mm x 75mm	\$135.65	\$127.68	\$128.91	\$143.23	\$150.69	\$161.83	\$176.45	\$140.09	
100mm x 75mm	\$135.65	\$127.68	\$128.91	\$143.23	\$150.69	\$161.83	\$176.45	\$140.09	
100mm x 50mm	\$135.65	\$127.68	\$128.91	\$143.23	\$150.69	\$161.83	\$176.45	\$140.09	
100mm x 100mm	\$151.01	\$138.93	\$140.79	\$162.50	\$173.80	\$184.63	\$206.79	\$157.74	
100mm x 150mm	\$162.73	\$150.65	\$152.51	\$174.22	\$185.52	\$196.35	\$218.51	\$169.46	
150mm x 150mm	\$176.70	\$158.58	\$161.37	\$193.94	\$210.88	\$221.28	\$254.51	\$186.79	
200mm x 200mm	\$201.27	\$180.12	\$183.38	\$221.38	\$241.15	\$249.60	\$288.36	\$213.04	
250mm x 250mm	\$226.12	\$201.95	\$205.68	\$249.10	\$271.69	\$279.92	\$324.22	\$239.57	

Rectangle / Square Downpipe

Offset - Fabricated to Size



Pricing Notes

* Allow for the amount of pipe required at per metre rates from previous page

* Add Price for 2 x Riveted Bends as per below (or as many bends as required)

.55mm Material - Price Per Each Riveted Bend - Labour Only

Pipe Size

	75 x 75	100 x 75	100 x 50	100 x 100	100 x 150	150 x 150	200 x 200	250 x 250
CB ZA GAL	\$43.95	\$43.95	\$43.95	\$43.95	\$49.81	\$49.81	\$55.67	\$61.67
SS	\$49.81	\$49.81	\$49.81	\$49.81	\$55.67	\$55.67	\$60.67	\$66.67

Riveted Elbow - 300mm x 300mm



Size	C/bond	Zinc	Gal	Ultra	Metallic	304 2b	316 2b	Matt
75mm x 75mm	\$67.83	\$63.84	\$64.45	\$71.62	\$75.35	\$80.91	\$88.22	\$70.04
100mm x 75mm	\$67.83	\$63.84	\$64.45	\$71.62	\$75.35	\$80.91	\$88.22	\$70.04
100mm x 50mm	\$67.83	\$63.84	\$64.45	\$71.62	\$75.35	\$80.91	\$88.22	\$70.04
100mm x 100mm	\$75.51	\$69.46	\$70.40	\$81.25	\$86.90	\$92.32	\$103.39	\$78.87
100mm x 150mm	\$81.37	\$75.32	\$76.26	\$87.11	\$92.76	\$98.18	\$109.25	\$84.73
150mm x 150mm	\$88.35	\$79.29	\$80.69	\$96.97	\$105.44	\$110.64	\$127.25	\$93.40
200mm x 200mm	\$100.64	\$90.06	\$91.69	\$110.69	\$120.57	\$124.80	\$144.18	\$106.52
250mm x 250mm	\$113.06	\$100.98	\$102.84	\$124.55	\$135.85	\$139.96	\$162.11	\$119.78

Rectangle / Square Downpipe Accessories



Clip Only Price - .55mm Material

Size	C/bond	Zinc	Gal	Ultra	Metallic	304 2b	316 2b	Matt	
75mm x 75mm	\$7.70	\$7.54	\$7.57	\$7.86	\$8.01	\$8.00	\$8.30	\$7.79	
100mm x 75mm	\$7.70	\$7.54	\$7.57	\$7.86	\$8.01	\$8.00	\$8.30	\$7.79	
100mm x 50mm	\$7.70	\$7.54	\$7.57	\$7.86	\$8.01	\$8.00	\$8.30	\$7.79	
100mm x 100mm	\$9.31	\$9.09	\$9.12	\$9.53	\$9.74	\$9.73	\$10.14	\$9.44	
100mm x 150mm	\$9.31	\$9.09	\$9.12	\$9.53	\$9.74	\$9.73	\$10.14	\$9.44	
150mm x 150mm	\$11.01	\$10.69	\$10.74	\$11.32	\$11.63	\$11.61	\$12.21	\$11.19	
200mm x 200mm	\$12.71	\$12.28	\$12.35	\$13.12	\$13.52	\$13.49	\$14.27	\$12.95	
250mm x 250mm	\$14.62	\$14.12	\$14.20	\$15.08	\$15.55	\$15.51	\$16.41	\$14.89	



Stock Zincalume Drop to Suit 100mm x 75mm Downpipe

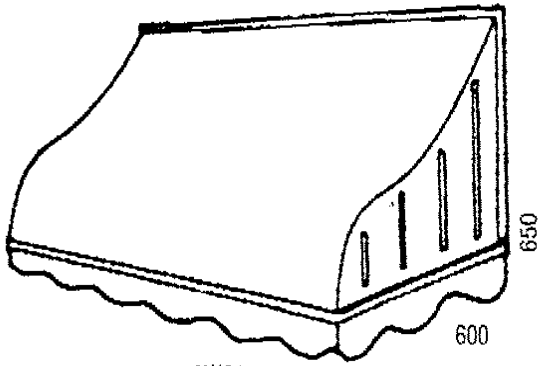
\$7.25	EACH
---------------	-------------



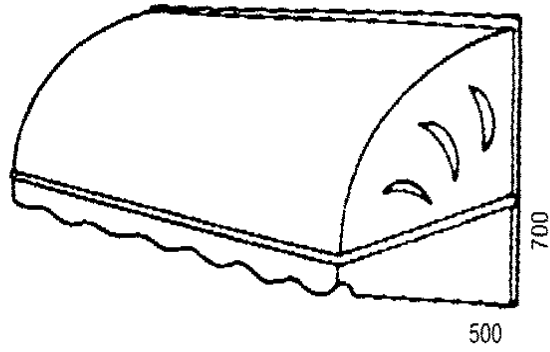
Fabricated Drop - up to 100mm long

Size	C/bond	Zinc	Gal	Ultra	Metallic	304 2b	316 2b	Matt	
75mm x 75mm	\$17.86	\$17.74	\$17.76	\$17.98	\$18.09	\$18.08	\$18.30	\$17.93	
100mm x 75mm	\$18.14	\$17.90	\$17.94	\$18.37	\$18.60	\$18.58	\$19.02	\$18.27	
100mm x 50mm	\$18.42	\$18.06	\$18.11	\$18.76	\$19.10	\$19.08	\$19.74	\$18.62	
100mm x 100mm	\$18.70	\$18.22	\$18.29	\$19.16	\$19.61	\$19.58	\$20.46	\$18.97	
100mm x 150mm	\$18.98	\$18.37	\$18.47	\$19.55	\$20.12	\$20.07	\$21.18	\$19.31	
150mm x 150mm	\$22.75	\$21.78	\$21.93	\$23.67	\$24.57	\$24.50	\$26.27	\$23.28	
200mm x 200mm	\$26.24	\$25.03	\$25.21	\$27.38	\$28.51	\$28.43	\$30.64	\$26.91	
250mm x 250mm	\$30.24	\$29.03	\$29.21	\$31.38	\$32.51	\$32.43	\$34.64	\$30.91	

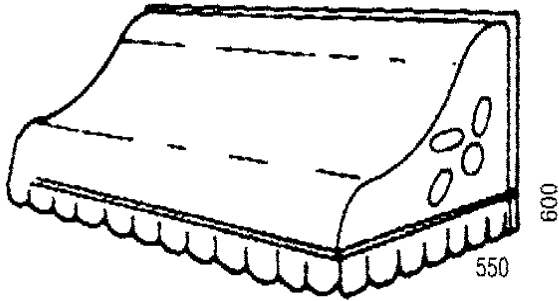
Window Hoods



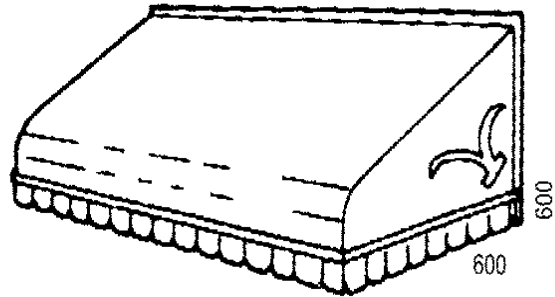
AW01



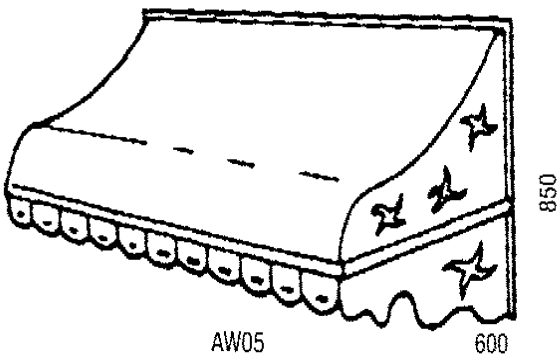
AW02



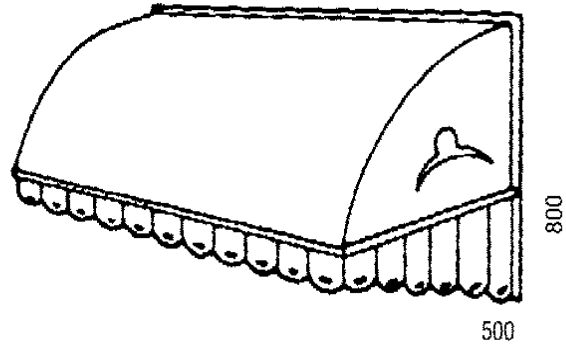
AW03



AW04



AW05



AW06

Charged Per Lineal Metre

Square Beads Only (No rolled beads)

1 metre Minimum Charge

C/bond	Zinc	Gal	Ultra	Metallic	304 2b	316 2b	Matt
\$344.56	\$314.36	\$319.01	\$373.29	\$401.53	\$399.32	\$454.70	\$361.38

Standard Lead time 5 working days

Spiral Lockseam Downpipe



Up to 8 metre Lengths

90mm diam to 229mm diam

Riveted Bends to make offset

T brackets & Clips Available

Set up Charge applies if under 12 metres in order

Standard Pipe lead Time is 10 Working Days, offsets longer

.6mm Downpipe - Price per lineal Metre

Diam		Galvabond	T Bracket (40 x .55mm) & Clip (40 x .55)	
90mm		\$22.87	\$15.13	
102mm		\$24.68	\$18.25	
152mm		\$35.56	\$18.25	
203mm		\$46.43	\$21.47	
229mm		\$57.31	\$24.70	

.8mm Downpipe - Price per lineal Metre

Diam	Zincalume	Galvabond	T Bracket (40 x 3mm) & Clip (40 x .55)	
90mm	\$28.31	\$28.31	\$24.63	
102mm	\$31.02	\$30.12	\$28.10	
152mm	\$40.99	\$44.62	\$28.10	
203mm	\$60.93	\$57.31	\$31.68	
229mm	\$69.99	\$68.18	\$35.25	

1mm Downpipe - Price per lineal Metre

Diam	Zincalume	Galvabond		
90mm	\$31.93	\$33.74		
102mm	\$35.56	\$37.37		
152mm	\$46.43	\$51.87		
203mm	\$68.18	\$71.81		
229mm	\$79.06	\$84.49		

Riveted Bend - labour rate

Diam	.6mm	.8mm	1mm	
90mm	\$43.95	\$52.74	\$70.33	
102mm	\$49.81	\$61.53	\$79.12	
152mm	\$55.67	\$70.33	\$90.84	
203mm	\$67.39	\$79.12	\$102.56	
229mm	\$73.26	\$87.91	\$111.35	

Heavy Duty Spiral Lockseam Downpipe

Up to 8 metre Lengths

102mm diam to 229mm diam

Welded Bends to make offset

T brackets & Clips Available

Set up Charge applies if under 12 metres in order

Standard Pipe lead Time is 10 Working Days, offsets longer

1.2mm Downpipe - Price per lineal Metre

Diam	Zincalume	Galvabond	T Bracket (40 x 3mm) & Clip (40 x .55)	
102mm	\$50.06	\$40.99	\$28.10	
152mm	\$75.43	\$57.31	\$28.10	
203mm	\$97.18	\$79.06	\$31.68	
229mm	\$111.68	\$93.56	\$35.25	

1.6mm Downpipe - Price per lineal Metre

Diam		Galvabond	T Bracket (3mm) & Welded Lug (3mm)	
102mm		\$44.62	\$38.94	
152mm		\$62.74	\$42.67	
203mm		\$86.31	\$52.27	
229mm		\$102.62	\$57.56	

Welded Bend - labour rate

Diam		1.2mm	1.6mm	
102mm		\$96.70	\$105.49	
152mm		\$105.49	\$111.35	
203mm		\$117.21	\$123.07	
229mm		\$126.00	\$131.86	

Stainless Steel Spiral Lockseam Downpipe

Up to 8 metre Lengths

90mm diam to 229mm diam

Riveted Bends to make offset

T brackets & Clips Available

Machine Marks / Scuffing will be visible from the Manufacturing Process

Set up Charge applies if under 12 metres in order

Standard Pipe lead Time is 10 Working Days, offsets longer

.6mm Downpipe - Price per lineal Metre

Diam		304 2b finish	316 2b finish	.55mm T & Clip
90mm		\$42.81	\$46.43	\$16.60
102mm		\$48.24	\$57.31	\$20.28
152mm		\$71.81	\$80.87	\$20.28
203mm		\$93.56	\$111.68	\$24.41
229mm		\$102.62	\$129.81	\$28.54

.9mm Downpipe - Price per lineal Metre

Diam		304 2b finish	316 2b finish	3mm T & .55mm Clip
90mm		\$66.37	\$75.43	\$29.15
102mm		\$75.43	\$84.49	\$34.71
152mm		\$111.68	\$120.74	\$34.71
203mm		\$147.93	\$166.06	\$40.72
229mm		\$166.06	\$193.24	\$46.74

Riveted Bend - labour rate

Diam		.6mm	.9mm	
90mm		\$52.74	\$70.33	
102mm		\$58.60	\$79.12	
152mm		\$70.33	\$90.84	
203mm		\$82.05	\$102.56	
229mm		\$87.91	\$111.35	

Hot Dip Galvanised Spiral Welded Downpipe

Up to 8 metre Lengths

90mm diam to 229mm diam

Welded Bends to make offset

T brackets & Clips Available

Set up Charge applies if under 12 metres in order

Standard Pipe lead Time is 20 Working Days, offsets longer

1.6mm Downpipe - Price per lineal Metre

	Mild Steel + Hot Dip Galvanised			
Diam	Pipe	Welded Bend	T Bracket (5mm) & Welded Lug (5mm)	
90mm	\$56.61	\$87.91	\$36.98	
102mm	\$60.24	\$96.70	\$39.92	
152mm	\$81.99	\$105.49	\$48.71	
203mm	\$114.61	\$117.21	\$52.77	
229mm	\$136.36	\$126.00	\$52.77	

2mm Downpipe - Price per lineal Metre

	Mild Steel + Hot Dip Galvanised			
Diam	Pipe	Welded Bend	T Bracket (5mm) & Welded Lug (5mm)	
90mm	\$69.30	\$96.70	\$36.98	
102mm	\$72.92	\$105.49	\$39.92	
152mm	\$105.55	\$111.35	\$48.71	
203mm	\$141.80	\$123.07	\$52.77	
229mm	\$168.08	\$131.86	\$52.77	

3mm Downpipe - Price per lineal Metre

	Mild Steel + Hot Dip Galvanised			
Diam	Pipe	Welded Bend	T Bracket (5mm) & Welded Lug (5mm)	
90mm	\$94.67	\$102.56	\$36.98	
102mm	\$101.02	\$111.35	\$39.92	
152mm	\$149.95	\$117.21	\$48.71	
203mm	\$205.24	\$126.00	\$52.77	
229mm	\$225.17	\$134.79	\$52.77	

Stainless Steel Spiral Welded Downpipe

Up to 8 metre Lengths

90mm diam to 229mm diam

Welded Bends to make offset

T brackets & Clips Available

Machine Marks / Scuffing will be visible from the Manufacturing Process

Set up Charge applies if under 12 metres in order

Standard Pipe lead Time is 10 Working Days, offsets longer

1.2mm Downpipe - Price per lineal Metre

Diam	304 2b finish	316 2b finish	Welded Bend	T bkt & Clip
90mm	\$60.24	\$65.67	\$73.26	\$38.94
102mm	\$60.24	\$65.67	\$73.26	\$42.67
152mm	\$87.42	\$96.49	\$102.56	\$52.27
203mm	\$114.61	\$123.67	\$117.21	\$57.56
229mm	\$132.74	\$141.80	\$117.21	\$57.56

1.6mm Downpipe - Price per lineal Metre

Diam	304 2b finish	316 2b finish	Welded Bend	T bkt & Clip
90mm	\$78.36	\$114.61	\$73.26	38.94
102mm	\$78.36	\$114.61	\$73.26	42.67
152mm	\$114.61	\$168.99	\$102.56	52.27
203mm	\$150.86	\$223.36	\$117.21	57.56
229mm	\$178.05	\$250.55	\$117.21	57.56

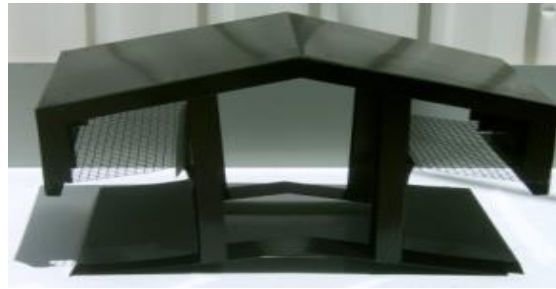
2mm Downpipe - Price per lineal Metre

Diam	304 2b finish	316 2b finish	Welded Bend	T bkt & Clip
90mm	\$96.49	\$123.67	\$73.26	45.47
102mm	\$96.49	\$123.67	\$73.26	52.75
152mm	\$132.74	\$178.05	\$102.56	65.94
203mm	\$178.05	\$241.49	\$117.21	73.54
229mm	\$205.24	\$277.74	\$117.21	73.54

Ridge Vent System



Open Top



Closed Top

Open Top from 300mm Throat to 1200mm Throat

Closed Top from 300mm Throat to 600mm Throat

Supplied in Kit Form

Standard Lead Time is 10 Working Days

Engineered Data available - Open Top Version Only

.55mm Material - Price Per Lineal Metre

Small Quantity - Less Than 10 Metres

Throat
300mm
450mm
600mm
750mm
900mm
1200mm

Open Top	
c/bond	zinc
\$300.17	\$258.26
\$402.36	\$333.70
\$535.87	\$451.10
\$677.49	\$592.41
\$860.39	\$763.69
\$1,171.30	\$1,062.42

Closed Top	
c/bond	zinc
\$217.30	\$185.20
\$321.03	\$271.34
\$404.58	\$340.19

Quantity - Greater Than 10 Metres

Throat
300mm
450mm
600mm
750mm
900mm
1200mm

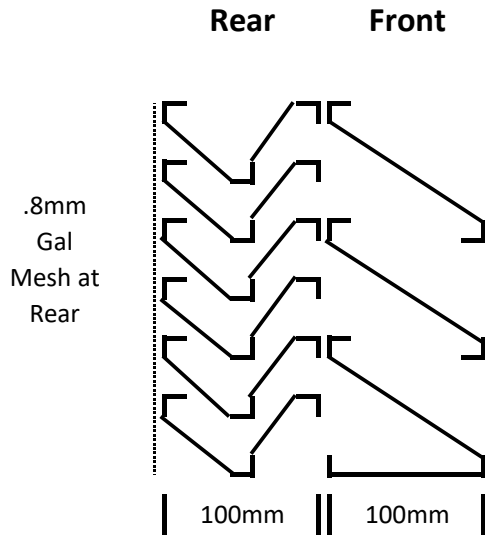
Open Top	
c/bond	zinc
\$285.16	\$245.35
\$382.24	\$317.02
\$509.08	\$428.54
\$643.62	\$562.78
\$817.37	\$725.51
\$1,112.74	\$1,009.30

Closed Top	
c/bond	zinc
\$206.44	\$175.94
\$304.98	\$257.77
\$384.35	\$323.18

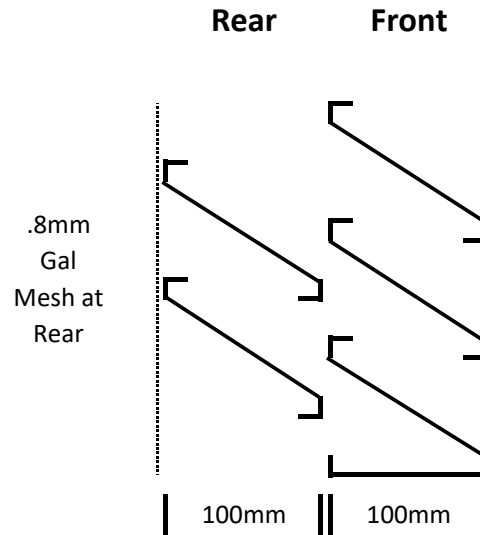
Quantity Greater than 50 Metres - Ask for Pricing

Fixed Metal Louvres - Side Profiles

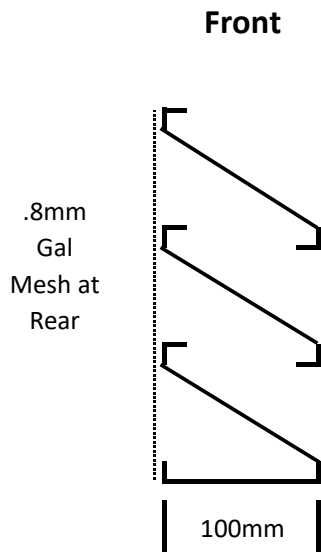
2 Stage Louvre



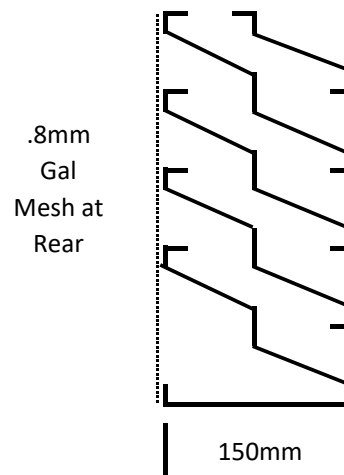
Basic 2 Stage Louvre



Standard Single Stage Louvre



Stepped Single Stage Louvre



Louvres are charged per square metre - 1 metre minmum charge per Louvre

Fixed Louvres



100mm wide Bank

.8mm Gal mesh at Back

.55mm Blades and Channel

Can add Perimeter Flashing

Standard Lead Time 5 Working days

Minimum Charge 1m²

Price Per Square Metre - .55mm Material

Version	C/bond	Zinc	Gal	Ultra	Metallic	Matt	
Standard Single Stage	\$256.82	\$219.45	\$240.66	\$312.96	\$350.59	\$292.50	
Stepped Single Stage	\$385.22	\$329.17	\$360.99	\$469.45	\$525.89	\$438.75	
Basic 2 Stage	\$577.83	\$493.75	\$541.49	\$704.17	\$788.83	\$658.13	
True 2 stage	\$898.85	\$768.06	\$842.31	\$1,095.38	\$1,227.07	\$1,023.76	

Extra Per Square Metre - Add Angle Flashing to Perimeter

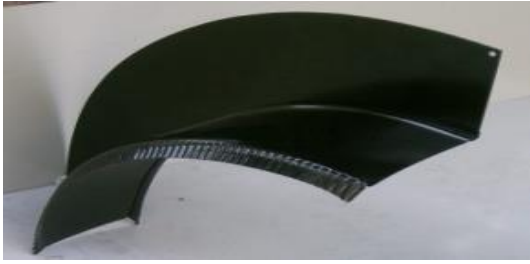
C/bond	Zinc	Gal	Ultra	Metallic	Matt	
\$94.92	\$87.25	\$91.09	\$104.86	\$112.03	\$101.84	

OTHER UPGRADES

Change to Stainless Steel Mesh at Back - Extra per square metre

\$101.21

Curved Flashings



Single Curves - Aprons and Barge - Per Lineal Metre

Zincalume	\$77.64
Colorbond	\$92.14
Matt / Ultra / Metallic	\$105.92



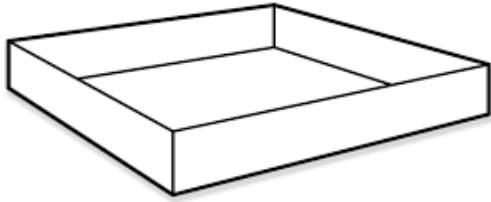
Double Curves - Parapets - Per Lineal Metre

Zincalume	\$126.35
Colorbond	\$144.47
Matt / Ultra / Metallic	\$161.71

Additional Curve - Over and Above the Double - Per Lineal Metre

Zincalume	\$81.18
Colorbond	\$87.23
Matt / Ultra / Metallic	\$98.62

Safe Trays



Safe Trays

.55mm Material - Price Per Each - 50mm sides

Square	C/bond	Zinc	Gal	Ultra	Metallic	304 2b	316 2b	Matt	
400mm	\$50.94	\$47.92	\$48.38	\$53.81	\$56.64	\$56.41	\$61.95	\$52.62	
450mm	\$50.94	\$47.92	\$48.38	\$53.81	\$56.64	\$56.41	\$61.95	\$52.62	
500mm	\$53.73	\$49.50	\$50.16	\$57.75	\$61.71	\$61.40	\$69.15	\$56.09	
550mm	\$53.73	\$49.50	\$50.16	\$57.75	\$61.71	\$61.40	\$69.15	\$56.09	
600mm	\$57.92	\$51.88	\$52.81	\$63.67	\$69.32	\$68.88	\$79.95	\$61.29	
700mm	\$66.58	\$59.33	\$60.45	\$73.47	\$80.25	\$79.72	\$93.01	\$70.62	
800mm	\$79.56	\$69.71	\$71.01	\$86.21	\$94.12	\$93.49	\$109.00	\$82.87	
900mm	\$92.41	\$80.32	\$82.19	\$103.90	\$115.19	\$114.31	\$136.46	\$99.13	
1000mm	\$106.79	\$92.29	\$94.52	\$120.57	\$134.13	\$133.07	\$159.65	\$114.86	
1090mm*	\$123.96	\$105.83	\$108.63	\$141.19	\$158.14	\$156.81	\$190.04	\$134.05	

Pricing Notes

* If 100mm sides, go up to next size for pricing

* If unequal sides - use the biggest side for pricing

* If larger than 1090mm square with 50mm side - will require lockseam join - Price on Request



Copper Safe Trays

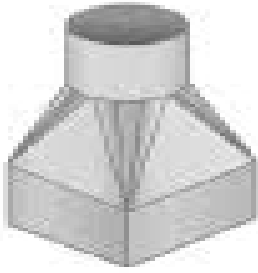
.55mm Material - Price Per Each - 50mm sides

Square	Each	Square	Each
400mm	\$100.14	700mm	\$172.94
450mm	\$108.45	800mm	\$189.56
500mm	\$116.76	900mm	\$254.05
550mm	\$129.22	1000mm	\$301.93
600mm	\$141.68	1090mm*	\$381.08

Pricing Notes

* As per safe trays top of page

Other Items



Transitions / Reducers

Square to Round

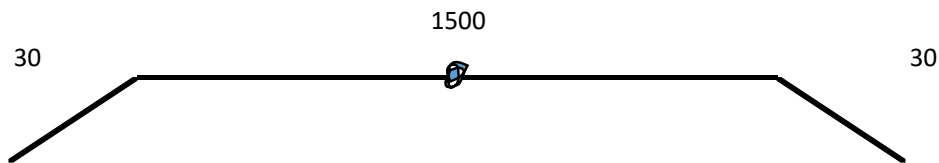
Rectangle to Round

Up to 300mm long overall

.55mm Material - Price Per Each

Pipe Sizes	C/bond	Zinc	Gal	Ultra	Metallic	304 2b	316 2b	Matt	
Up to 150mm	\$103.99	\$90.70	\$92.75	\$116.63	\$129.06	\$128.08	\$152.45	\$111.39	
151 to 300mm	\$132.61	\$113.28	\$116.26	\$151.00	\$169.07	\$167.66	\$203.10	\$143.38	

Lockseam Trays



For anything over 1200mm girth and 1200mm long a Lockseam joint would be required.

For example to price above: total girth is 1575mm (1560mm + 15mm for joint)

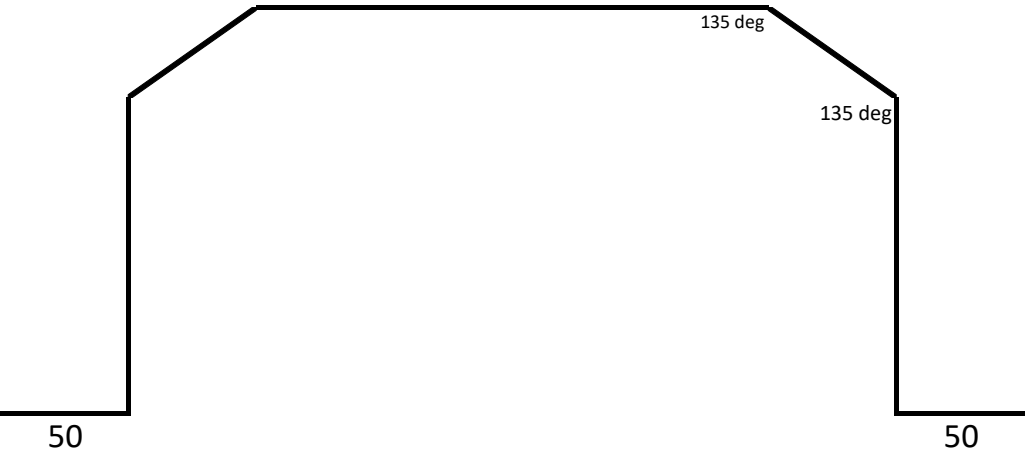
charged as	1200mm girth x 2 bends		
plus	400mm flat		
plus	Lockseam Joint	\$10.26	per metre

Upright Trays / Corner Notching

Price per corner to Notch prior to Folding	\$7.33	per corner
--	---------------	-------------------

Other Items

3mm Galvabond Folded Downpipe Protectors



3 holes punched in each 50mm flange for fixing

3.6 metre sheets kept in stock

600 girth	\$74.74	Per Metre
900 girth	\$110.62	Per Metre
1200 girth	\$119.59	Per Metre

Rate for 6 holes punched per length **\$29.30** **Per Unit**

MESH PRODUCTS 12mm X 12mm SQUARE

SUMP GUARDS				
	.8mm GAL	1.3mm GAL	1.3mm 304 SS	1.3mm 316 SS
300mm x 300mm x 150mm	47.22	63.23	78.18	83.07
400mm x 400mm x 150mm	48.52	65.07	86.01	92.86
500mm x 500mm x 150mm	64.59	81.73	109.14	118.11
600mm x 600mm x 150mm	66.00	83.73	117.63	128.72
700mm x 700mm x 150mm	67.85	86.35	128.72	142.58
800mm x 800mm x 150mm	84.13	103.31	153.16	169.47
900mm x 900mm x 150mm	84.13	103.31	153.16	169.47
DROP GUARDS				
	.8mm GAL	1.3mm GAL	1.3mm 304 SS	1.3mm 316 SS
100mm diam	29.95	30.23	33.22	34.20
150mm diam	36.25	36.70	41.69	43.32
225mm diam	45.58	46.26	53.74	56.19
FLASHINGS				
	.8mm GAL	1.3mm GAL	1.3mm 304 SS	1.3mm 316 SS
0 - 200mm Girth				
Flat	6.57	8.94	18.91	22.17
1 bend	8.04	10.41	20.38	23.64
2 bend	10.97	11.87	21.84	25.10
3 bend	12.43	13.34	23.31	26.57
4 bend	13.90	14.80	24.77	28.03
201mm to 400mm Girth				
Flat	7.98	10.94	27.39	32.78
1 bend	9.45	12.41	28.86	34.24
2 bend	12.38	13.87	30.32	35.71
3 bend	13.84	15.34	31.79	37.17
4 bend	15.31	16.80	33.25	38.64
401mm to 600mm Girth				
Flat	9.83	13.56	38.49	46.64
1 bend	11.30	15.03	39.95	48.11
2 bend	14.23	16.49	41.42	49.57
3 bend	15.69	17.96	42.88	51.04
4 bend	17.16	19.42	44.35	52.50
601mm to 900mm Girth				
Flat	13.37	18.57	59.69	73.15
1 bend	14.83	20.04	61.16	74.61
2 bend	17.76	21.50	62.62	76.08
3 bend	19.23	22.97	64.09	77.54
4 bend	20.69	24.43	65.55	79.01
901mm to 1200mm Girth				
Flat	15.27	21.27	71.11	87.42
1 bend	16.74	22.73	72.58	88.89
2 bend	19.67	24.20	74.04	90.35
3 bend	21.13	25.66	75.51	91.82
4 bend	22.60	27.13	76.97	93.28

BOLLARDS - CHS DOWNPIPE PROTECTOR

	Pre Galvanised Pipe		Hot Dip Galvanised Pipe	
Per Set	114.3mm OD x 3.6mm Wall	165.1mm OD x 3.5mm Wall	114.3mm OD x 3.6mm Wall	165.1mm OD x 3.5mm Wall
Up to 1625mm long	178.08	235.78	240.61	316.43
1626 to 2170mm long	204.51	276.56	288.19	382.89
2171 to 3250mm long	257.38	358.12	388.33	523.06
3251 to 6500mm long	415.97	602.81	683.77	936.31
Extras - Factory Welded				
Welded Bend	87.91	131.86	87.91	131.86
Welded Sleeve	64.46	82.05	64.46	82.05

Per set includes:

2 x Welded Lugs to pipe (50mm x 5mm)

2 x Loose T Brackets (50mm x 5mm)

Standard Lead Times

Pre Galvanised 3 - 5 Days

Hot Dip Galvanised 2 - 3 weeks



Pre Galvanised Can often come out rough and dirty



Hot Dip Galvanised is a much cleaner finish



Powder Coating

We use the services of two Professional Powder Coaters

Material is pre treated prior to coating

Dulux or Interpon Range

Can offer Warranty on Aluminium or Steel Substrates

Colour selection catalogue available

Minimum charge starts at \$100

Rates start at \$30 per m² depending on level of finish required

Standard Lead time is 5 - 7 working days for coating process

We can colour match from scratch - lead times and minimum costs apply

Dulux Duralloy Standard Range - Match Colorbond

Cost below is additional to Flashing Rates

Girth	per metre
100mm	\$3.63
200mm	\$7.25
300mm	\$10.88
400mm	\$14.50
500mm	\$18.13

Girth	per metre
600mm	\$21.75
800mm	\$29.00
1000mm	\$36.25
1200mm	\$43.50
1500mm	\$54.38

Notes to Consider

* Position of hanging holes

* Length size to avoid warping, especially for narrow profiles

Laser Cutting

We use the services of Professional Laser Cutters as required

Up to 6 metre lengths

Any material can be cut

Minimum charge starts at \$150

Standard lead time is 5 working days for cutting process

Galvanising

We use the services of two Professional Hot Dip Galvanising Plants

Minimum charge starts at \$325

Standard Lead time is 10 working days

Per Kg rate starts at \$3.00



Technical Data

Data Sheets available on request for



Colorbond XRW

Colorbond Permagard

Colorbond Matt

Colorbond Ultra

Colorbond Metallic

Galvabond G2

Zincalume G300

Colorbond Coolmax



Duralloy

Duratech

Precious

Electro

Alphatec

Fluoroset